

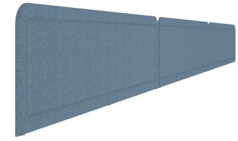


*Active
Components™*

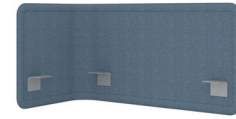
Screens



Accessory Screen



Center Screen



Corner Screen



Territory Screen

Upper Storage

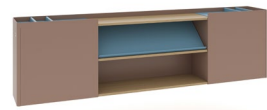


Personal Drawer with Divider



Nook

Lower Storage



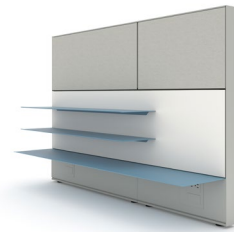
Suspended Ender



Suspended Pedestal



Security Drawer



Floating Shelves

Worksurfaces



Worksurface Support Leg



Pillowed Knife Edge Worksurface

Side Car



Side Car

Accessories



Liners & Drawer Accessories



Personal Storage Hook

Active Components

Active Components gives people variety and choice in storage, organization, and perceived privacy to help them perform their best.

An array of shapes, configurations, textures, and mix of materials warm up the work environment to create comfortable, cozy workspaces that evoke a residential atmosphere. Part of Haworth's Integrated Palette™, Active Components is designed to work with existing Haworth products to add flexibility in designing inspiring workspaces that support a range of different workstyles while maximizing space.



Collaborative spaces

When designed for flexibility, workstations in an open environment create personal spaces that also encourage people to come together for group conversations, breakout sessions, and casual chats.

Tips and tricks

Add soft seating at the end of worksurfaces to encourage and facilitate impromptu collaboration.

Screens set in an off-modular fashion provide space delineation and privacy while still allowing for the easy connections adjacent workers need to communicate about projects.

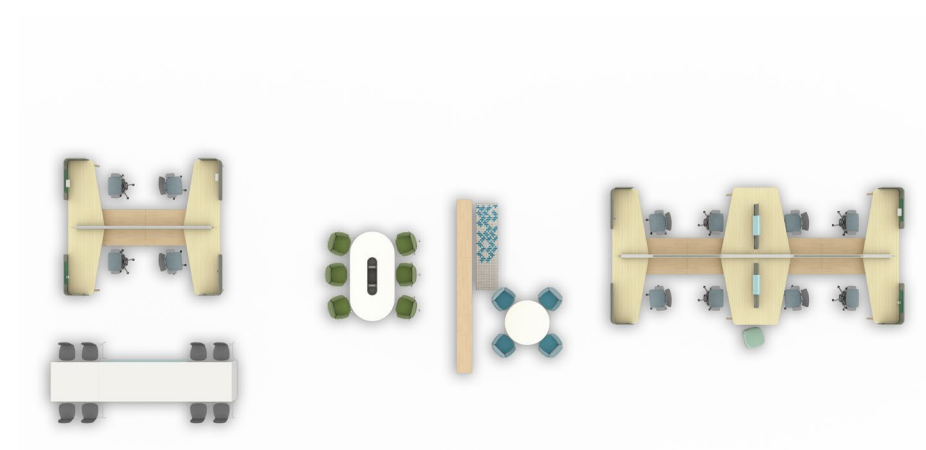
Visually soften a space and enhance comfort with pillowed knife edges on workstation surfaces.

Orient the narrow edge of a worksurface toward the aisle to open the workstation, inviting drop-in conversation within an individual space.

Freshen up a space by layering fabric screens and metal accessories, such as the saddle or inner accessory screen.

Corner screens create secluded nooks when visual privacy and focus are needed.

Open floor space and add an architectural element at the same time by using vertical stackable storage.



Touchdown spaces

Create inviting, unassigned spaces, ready and waiting for quick and casual collaborations, mobile workers, visitors, or those who just need the inspiration of a fresh perspective.

Tips and tricks

The Side Car is a creative solution for leveraging under-utilized spaces—offering an alternative work area or impromptu touchdown point.

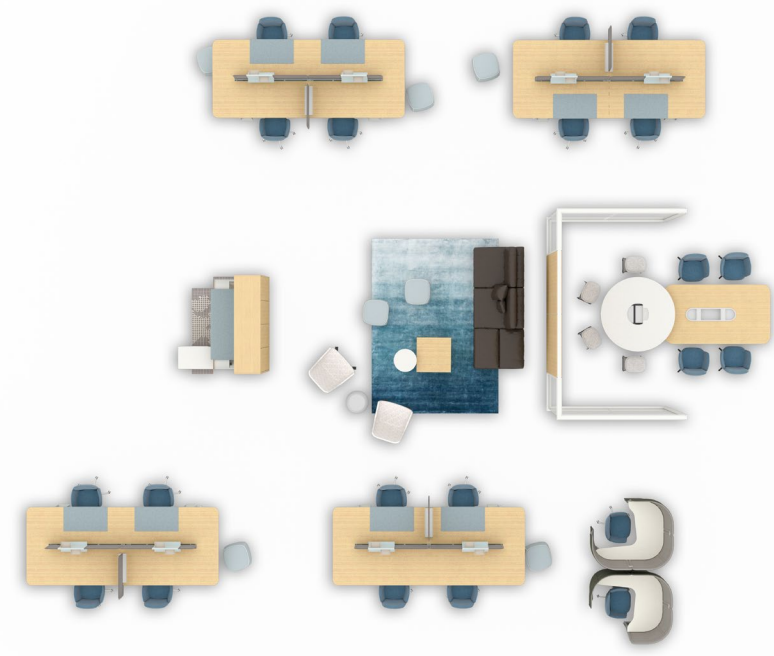
Individual space can be delineated with the use of territory screens or desk blotters.

Worksurfaces with overhangs invite and facilitate collaboration, making it easier for people to work together.

Foster workspace satisfaction and give something back to mobile workers by using higher grade materials on worksurfaces in unassigned areas, offsetting the impact of a reduction in dedicated workspaces.

An open suspended pedestal provides quick access to bags and gets them off the floor, while hooks accommodate other bags, jackets, umbrellas, etc.

Incorporate elements like the Openest® privacy desk in adjacent spaces to provide alternative retreats for privacy and concentration.





Spaces for well-being

Putting people at the center of design, with variety and choice in workstation storage, organization, personalization, and posture, supports user comfort and control over how they work—for improved morale, reduced stress, greater energy levels, and increased engagement.

Tips and tricks

With its built-in file and accessory storage, the multifunctional deluxe Side Car offers an alternative to a height-adjustable table and pedestal, allowing people to alternate postures.

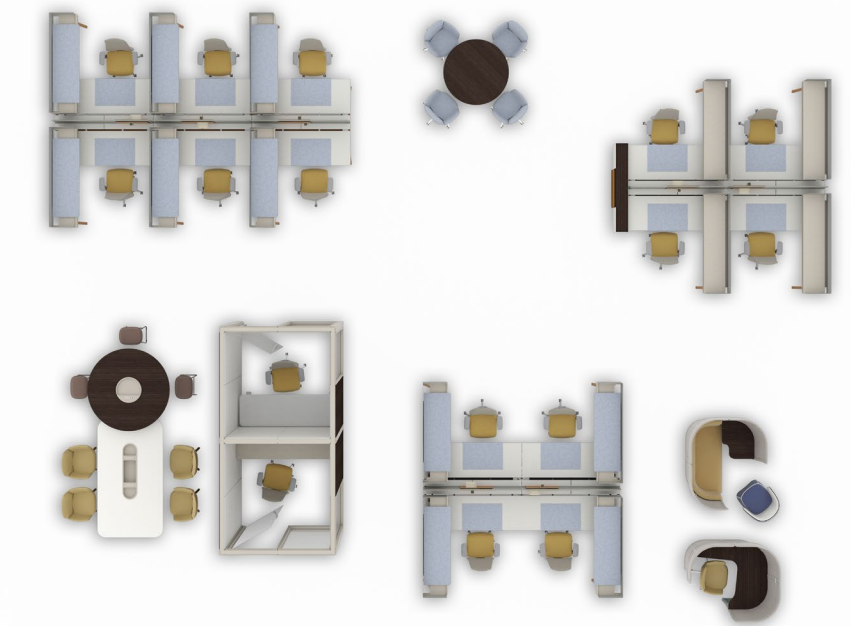
Make a space legible by using a mix of colors, materials, and accessories on items such as accessory screens, shrouds, legs, accent plates, and blotters.

Add warmth to a space and imply a connection to nature by choosing wood veneer legs and worksurfaces.

Incorporate a Fern™ task chair to support ergonomic comfort, or use Poppy™ guest seating to add warmth and a residential feel.

Worksurfaces in varying heights and widths offer a choice of sitting or standing for movement and ergonomic comfort, while supporting a variety of individual and collaborative activities.

To reduce visual distractions and improve well-being, use fabric screens or taller perforated shrouds on the Side Car.



Maximizing a small footprint

Designed specifically to fit into smaller workstations, Active Components maximizes space and adapts to individual workstyle needs, for a high level of function in smaller spaces.

Tips and tricks

Free up useful workspace and make the area feel bigger by leveraging vertical space and 9-inch floating shelves—rather than 24-inch deep return worksurfaces—to stack important materials and keep tools handy.

Let a Side Car do double duty in a space, providing both an alternative workspace and a posture change within the workstation—allowing users to choose how they want to work.

Use saddles or inner accessory screens to get tools off the worksurface and add an accent color to workstations.

Employ top-mounted nooks to share the storage footprint and return functional workspace back to each user.

Shorten a panel and wrap the worksurface to create a collaborative node within a workstation, freeing up conference rooms for larger meetings.

Create enclosed spaces adjacent to workstations that support a variety of activities conducted throughout the day, including private conversations.

